

International Student Prospectus



www.apeiro.edu.au



Contents

About Us	01
Why Australia?	02
Why Study in Perth	03
Getting Around in Perth	04
Places to Visit in and around Perth	06
Our Campus	08
Courses Offered	09
Entry Requirements	14
Course Fee & Intake Dates	15
How to Enrol	16
Student Support Services	17





About us

Established in Perth, Western Australia, APEIRO Institute exhibits energy and passion towards offering exceptional learning platform that drives us to be the most advanced educational provider in Australia. We are located in the heart of Perth City with easy access to public transport, cafes and shopping centers.

We are a team of professionals keen to share our knowledge and build better outcomes in the community we live in. As our name says, we are here to create infinite possibilities for all the new beginners willing to learn and adapt to the changes in the modern world.



Our Mission

Our Mission is to be a connoisseur in the Vocational Education Sector by developing the future workforce with professional and personal skills required to perform as an outstanding individual



Our Vision

APEIRO Institute has a vision to develop and deliver courses that create longterm career prospects for those that are fascinated to change the world by inventing solutions that satisfy the needs of the modern world.



Why AUSTRALIA?

Australia is a leading global education powerhouse with some of the best facilities and educators, providing local and international students with a range of quality study options.

Australia has the third highest number of international students in the world behind only the United Kingdom and the United States despite having a low population of 23 million. Australia has 7 of the top 100 universities around the globe and delivers over 22,000 courses through 1,100 institutions.

We are the 4th happiest country in the world and have five of the 30 best cities in the world for students. Living in Australia will be a new experience, but there are support services available to help make adjusting to life in Australia easier.

When most people think of Australia, they see wide open spaces of outback bush, kangaroos, koalas and clean air and water. However, Australia has so much more to offer than just that! Many international students are choosing to study in Australia because of its friendly, laid-back nature, excellent education system, and high standard of living. No matter what type of study you are doing in Australia, whether you are here for a few months or a few years, some research and planning will help you have a safe and rewarding study experience.

Australia's standard of living is amongst the highest in the world. Living expenses and tuition costs are considerably lower in Australia than they are in the United States and the United Kingdom. International students are able to work part time up to 20 hours per week while they study, allowing them to offset their living costs.



Population

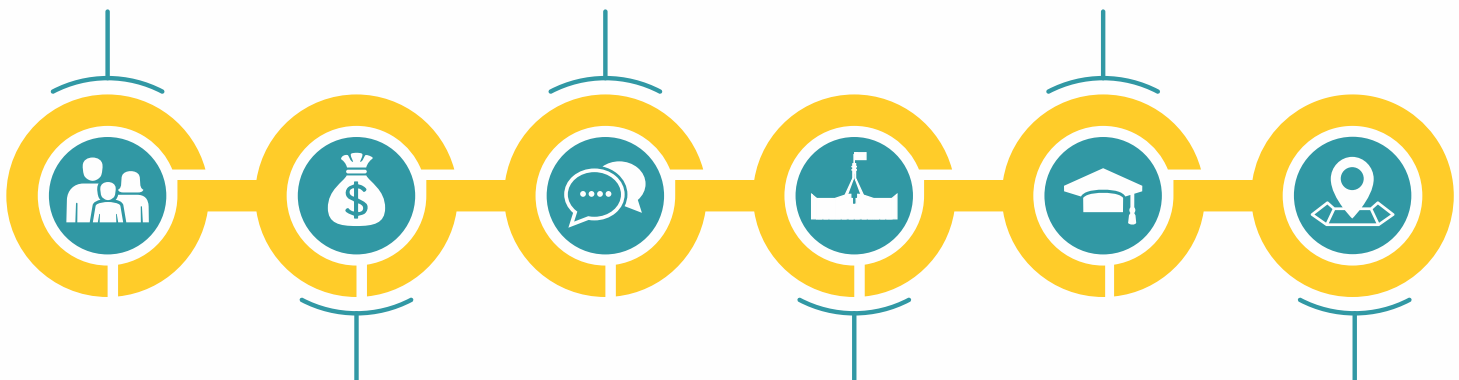
23 Million +
(47% born Outside
of Australia)

Languages

Spoken other
than ENGLISH
260+

Overseas Students

For 2016
712,884



Currency

Australian
Dollar \$

Capital City

Canberra

Total Area

7,692,024 km²
(As big as the
United States)

Why Study in PERTH Western Australia?

Western Australia is known as a quality education destination and presents many study opportunities for international students. Famous for its friendly people and relaxed atmosphere, Perth embodies the true Australian lifestyle. There are not many places left in the world where a passer-by will warmly greet you on the street or stop to have a chat. Australians love to interact with overseas visitors and embrace other cultures.

Perth is a city of growth, success and possibilities. Recent years have seen the benefits of our resources boom flow into every part of our lives, from education to transport, and tens of thousands of people have come to see the natural beauty of Western Australia and enjoy its year-round sunshine. The new international airport, along with the Perth Arena and expanding city rail network, riverside developments and beach-fronts are shaping Perth into Australia's western gateway for tourism and investment.

You can choose your course from a range of study options at universities, private higher education, vocational and English language institutions and schools in Perth and regional Western Australia. Whether it's English competency exam preparation, medicine, engineering, tourism, marketing or marine biology, you'll find a suitable course in Perth.

The Western Australian education system is recognised around the world and can help you succeed in your career, in further studies and in life.

As an international student studying in Perth, you'll have the peace of mind of knowing that your interests and your place in your course are protected by government laws. There are strict regulations and quality assurance systems in place which protect students and ensure that they receive a quality education.

Western Australia by numbers*

WA Population - 2,567,800.

Perth Population - 2.1 million people.

Aboriginal and Torres Strait Islanders account for 3.1 percent of the Western Australian population.

The top five languages (Other than English) - Mandarin, Italian, Filipino/Tagalog, Vietnamese and Cantonese.

The top five countries of birth (other than Australia) - England, New Zealand, India, South Africa and Philippines.

Western Australia is Australia's largest state - total area is 2,529,875 km² (33 % of Australia's total land mass)

Cost of living in Perth WA (Per Week)

- Average Accommodation costs: AUD \$150-260 (Shared House or Apartment)
- Public Transport: AUD \$20-\$50
- Food: AUD \$60-\$100



Schooling Obligations for Dependents

Where school aged children are included in your student visa application, schooling costs of AUD8,000 per year for each child will need to be added to the amount of funds that is required. This amount is the minimum required for a visa application only and you are responsible for researching schooling costs, which may vary widely between states, territories and schools in Australia.

You do not have to provide evidence of schooling costs if you:

- Are a PHD student and can show you have enrolled your child in an Australian government school where the fees have been waived
- Have received an Australian Commonwealth Government scholarship, including Foreign Affairs and Defence sponsored students, and you can show you have enrolled your child in a government school where the fees have been waived.

(Source: Department of Home Affairs)

For more information on schooling options, please refer to: Study West: www.studywest.des.wa.gov.au/studyinwa/Schooling/Pages/default.aspx

For the private schools in Western Australia information can be obtained directly from: Private Schools Directory: <http://www.privateschoolsdirectory.com.au/perth-schools.php>

Association of Independent Schools Western Australia: www.ais.wa.edu.au

For more information, contact APEIRO INSTITUTE at info@apeiro.edu.au

The Department of Immigration and Border Protection has financial requirements you must meet in order to receive a student visa for Australia. From 1 July 2016 the 12 month living cost is estimated at \$19,830 per year for a single individual. For more information on latest requirements and costs refer to <https://www.studyinaustralia.gov.au/english/live-in-australia/living-costs>

Getting Around in Perth

Getting around the City of Perth is easy and doesn't necessarily need to cost you anything! Public transport can be a quick and convenient option for many trips. The City of Perth is the primary destination for public transport with connections to all of metropolitan Perth. Instead of risking traffic, try the bus or train. You can sit back and relax, save on car running and parking costs and avoid the hassles of driving while helping the environment!

Being on a Student Visa benefits you obtaining a Student Concession Fare for your public travel on Public Transport (Transperth) in Perth. You need to register for a SmartRider by submitting your application to Transperth along with your Student ID card. (Speak to One of our Friendly Student Support staff member for assistance)



Buses

A Free Transit Zone (FTZ) also operates within the City of Perth boundaries. You can travel on any Transperth bus within the boundary limits for free. APEIRO INSTITUTE is located in the Free Transit Zone with bus stops just around the corner.

FTZ signposts are displayed on the route limits. For travel outside the FTZ, you may purchase a ticket from the driver or purchase a SmartRider from the Perth Railway Station on Wellington Street or selected outlets.



Trains

Transperth trains are a division of the Public Transport Authority of Western Australia. The Public Transport Authority operates Perth metropolitan rail system as part of Transperth network.

For further information, visit Transperth Information Centre's at bus stations and train stations.

Phone Transperth: 13 6213

Transperth Website: www.transperth.wa.gov.au



Ferry Terminal

Transperth ferry services across the Swan River to the South Perth foreshore leave from the Elizabeth Quay Ferry Terminal, located under the big blue canopy on the Western Promenade. You can cross to South Perth in around ten minutes to visit the Perth Zoo and delight in the views of Elizabeth Quay from the South Perth foreshore.

The ferry kiosk opens daily from 8am to 4pm.



Taxis

Designated taxi ranks are located around the central city for safe and convenient travel. Supervised taxi ranks operate on Friday and Saturday nights. These ranks are located on Milligan Street Northbridge and William Street Perth. Taxis may also be hailed on the street or ordered by telephone (13 CABS)

Additionally, Ride Share services are available across Perth through various providers.





Places to Visit in and around Perth

Kings Park and Botanic Gardens



One of the largest inner-city parks in the world, Kings Park and Botanic Garden covers 400 hectares of Perth's heart with serene natural bushland and sculpted gardens. It's perched high on the crest of Mount Eliza, making it a top spot to take in sweeping panoramas of Perth's city skyline and Swan River.

Rottnest Island



Famous for its laid back atmosphere and beautiful beaches, Rottneest Island lies just 18 kilometres offshore from Perth surrounded by the sparkling Indian Ocean. This is where the locals go to swim, surf, snorkel, fish and relax.

Swan Valley



Located 25 minutes from Perth City, the Swan Valley is home to an ever-growing list of restaurants and cafes, wineries, breweries and artisan wares. It is packed with fresh seasonal produce, with countless restaurants and cafes offering everything from fine dining to salt-of-the-earth pub grub to traditional high tea. The Swan Valley is the first and only Humane Food Region in Australia. This initiative is a regional commitment to supporting the welfare of animals and producing high quality, healthier, tastier food.

Fremantle Markets



Built in 1897, Fremantle Markets is one of the port city's most significant landmarks and has rightfully earned itself a reputation as one of the best destinations in Fremantle for locals and tourists alike, as well as a leading source of independent wares and produce.

The Pinnacles



Attracting over 190,000 visitors each year, the Pinnacles of Nambung National Park are the major natural attraction in the Coral Coast region of Cervantes and Jurien Bay. The park is located roughly 200 kilometres north of Perth and covers an area of 17,487 hectares, providing natural habitat for an extensive array of native animals and bird life.

Margaret River



Margaret River is a small town 277 kms south of Perth in Western Australia, known for its craft breweries, boutiques and surrounding wineries. Beaches and surf breaks line the nearby coast, whose waters host migratory whales (Jun–Nov). Stretching between 2 lighthouses north and south of the town, the long-distance walk, the Cape to Cape Track, fringes the limestone caves and sea cliffs of Leeuwin-Naturaliste National Park.

Perth Zoo



With 1,200 different animals from over 160 species, the 1.7-million-square-metre Perth Zoo dates all the way back to 1898 and attracts hundreds of thousands of visitors year on year. Holidaymakers flock here to admire the local wildlife they can learn so much about, alongside a range of other exhibits demonstrating species from four different continents around the world.

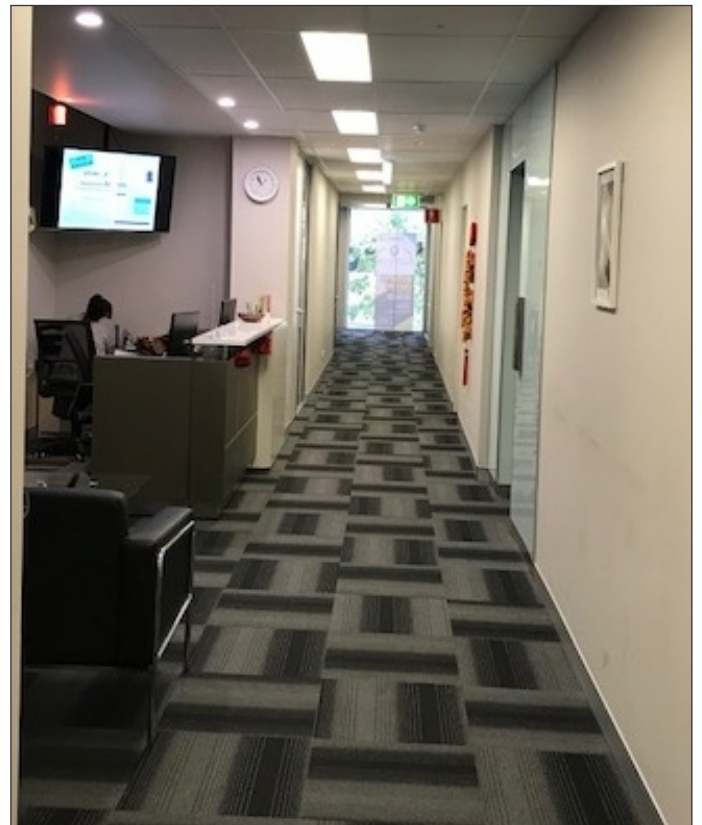


Our Campus

Offering a friendly and engaging study experience to its students, APEIRO INSTITUTE prides itself of the wonderful classes held in its hallowed halls. Students will be able to learn much faster and better within its quaint classroom setting. The classrooms at APEIRO INSTITUTE are spacious and enhanced by natural lightening providing a perfect study environment. Application of the latest teaching methods are implemented in order for students to better understand the theoretical and practical work relevant for their chosen field of study. Instructors utilise state of the art multimedia technologies that further enhance a student's comprehension of the topics being discussed.

Campus Facilities

- Print and Scan services on the basis of pay per usage
- Free Wireless Internet usage (Limited Access per student)
- Online Resources and Library
- Spacious and Modern Classrooms
- Public transport at doorstep
- Central location and easy access



Courses Offered

Business Courses



Cricos Course Code: 097653E

BSB50215

Diploma of Business

Cricos Course Code: 097654D

BSB60215

Advanced Diploma
of Business



ELICOS Courses



Cricos Course Code: 097833A

PTE Preparation
for Success

Cricos Course Code: 097832B

IELTS Preparation
for Success



Diploma of Business

Cricos Course Code: 097653E

Diploma of Business qualification at APEIRO Institute reflects the role of individuals with substantial experience in a range of settings who are seeking to further develop their skills across a wide range of business functions. This qualification is also suited to the needs of individuals with little or no vocational experience, but who possess sound theoretical business skills and knowledge that they would like to develop in order to create further educational and employment opportunities.



Career Outcome

Job roles and titles vary across different industry sectors. Possible job titles relevant to this qualification include:

- Executive officer
- Administration Manager
- Program consultant
- Program coordinator

Duration

52 Weeks (inc 12 weeks Holidays)
Classes are rostered for 2½ days per week
(20 hours per week) + Self directed study

Recognition of Prior Learning (RPL)

RPL is available upon application

Course Content

This course consists of 8 Elective units.

- BSBMGT403 - Implement continuous improvement
- BSBHRM501 - Manage human resources services
- BSBHRM513 - Manage workforce planning
- BSBPMG522 - Undertake Project Work
- BSBMKG506 - Plan market research
- BSBMKG502 - Establish and adjust the marketing mix
- BSBADM502 - Manage meetings
- BSBADM504 - Plan and implement administrative systems

What Next

Successful completion of Diploma of Business gives an opportunity to a learner to enroll in Advanced Diploma of Business course at Apeiro Institute or elsewhere. Learner may be eligible to apply for credit transfer in Australian Universities. Candidate wishing to proceed to further their education in an Australian University will be advised to contact the University directly for enrolment purpose.



Advanced Diploma of Business

Cricos Course Code: 097654D

This qualification reflects the role of individuals with some or more experience in a senior administrative role who are seeking to develop expertise across a wider range of business functions. The qualification is suited to individuals who possess significant theoretical business skills and knowledge and wish to consolidate and build pathways to further educational or employment opportunities.

Career Outcome

Job roles and titles vary across different industry sectors. Possible job titles relevant to this qualification include:

- Executive Manager or Director
- Manager, Human Resource (Strategy)
- Senior Executive
- Program coordinator
- General Manager

Duration

52 Weeks (inc 12 weeks Holidays)
Classes are rostered for 2½ days per week
(20 hours per week) + Self directed study

Recognition of Prior Learning (RPL)

RPL is available upon application

Course Content

This course consists of 8 Elective units.

- BSBADV602 - Develop an advertising campaign
- BSBADV604 - Execute an advertising campaign
- BSBADV605 - Evaluate campaign effectiveness
- BSBINM601 - Manage knowledge and information
- BSBMKG605 - Evaluate international marketing opportunities
- BSBMGT615 - Contribute to organisation development
- BSBHRM604 - Manage Employee Relations
- BSBDIV601 - Develop and implement diversity policy

What Next

Successful completion of Advanced Diploma of Business may give an opportunity to a learner to apply for credit transfer in Australian Universities. Candidate wishing to proceed to further their education in an Australian University will be advised to contact the University directly for enrolment purpose.



PTE Preparation For Success

Cricos Course Code: 097833A

PTE Preparation for SUCCESS by APEIRO Institute provides an opportunity for students to enable their English Language proficiency to meet the standards set by Educational, Professional and Government bodies across Australia. This program gives the students the chance to improve their Enabling skills in Listening, Reading, Writing and Speaking of English Language.

Duration

4 to 14 Weeks (inc 2 weeks Holidays for 14 weeks)
Classes are rostered for 2½ days per week (20 hours per week) + Self directed study

Course Content

- PTE Speaking Skills
- PTE Reading Skills
- PTE Listening Skills
- PTE Writing Skills
- PTE Vocabulary and Grammar

IELTS Preparation For Success

Cricos Course Code: 097832B

IELTS Preparation for SUCCESS by APEIRO Institute provides an opportunity for students to enable their English Language proficiency to meet the standards set by Educational, Professional and Government bodies across Australia. This program gives the students the chance to improve their English Language skills in Listening, Reading, Writing and Speaking.

Duration

4 to 26 Weeks (inc 6 weeks Holidays for 26 weeks)
Classes are rostered for 2½ days per week (20 hours per week) + Self directed study

Course Content

- IELTS Speaking Skills
- IELTS Reading Skills
- IELTS Listening Skills
- IELTS Writing Skills
- IELTS Vocabulary and Grammar



Course Outcome

Students are expected to reach PTE Equivalent 42 or higher upon successful completion of this course.

What Next

Participants completing this course will have the opportunity to enter and/or gain recognition in other courses of their interest at Apeiro Institute (subject to course eligibility requirement). Applicant is free to choose the registered course provider elsewhere.

Course Outcome

Students are expected to reach IELTS Equivalent 5.5 Band score or above upon successful completion of this course.

What Next

Participants completing this course will have the opportunity to enter and/or gain recognition in other courses of their interest at Apeiro Institute (subject to course eligibility requirement). Applicant is free to choose the registered course provider elsewhere.



Entry Requirements

Age Restrictions

All international students must be at least 18 years or above at the time of the course commencement to study at APEIRO INSTITUTE.

For Diploma Level Courses

- Must be 18 years or above AND
- Completion of Australian Year 12 or equivalent AND
- IELTS Academic Test Score of at least 5.5 or Equivalent

For ELICOS Courses

- All applicants may have completed Australian Year 12 (or equivalent) AND
- Must be 18 years or above AND meet at least one of the following:
 - IELTS Test Score of minimum 4.5 overall or
 - Other recognised English Language tests such as:

TOEFL iBT Test Score of 46
PTE Academic Test Score of 29 or above
CEFR B1

Cambridge FCE English: At least 'C' Grade
OET Grade C or above
TOEIC 405 or above



Course Fee and Intake Dates

Course Title	CRICOS Course Code	Duration	Tuition Fee*	Materials Fee*	Intake Dates
BUSINESS					
BSB50215 Diploma of Business	097653E	52 Weeks (inc 12 weeks Holidays)	\$8000	\$300	2019 - 23 Sept, 28 Oct 2020 - 6 Jan, 11 Feb, 16 March, 11 May, 6 July, 10 Aug, 28 Sept, 2 Nov
BSB60215 Advanced Diploma of Business	097654D	52 Weeks (inc 12 weeks Holidays)	\$8500	\$300	2019 - 25 Sept, 30 Oct 2020 - 8 Jan, 12 Feb, 18 March, 13 May, 8 July, 12 Aug, 30 Sept, 4 Nov
ELICOS					
PTE Preparation for Success	097833A	4-14 Weeks <i>(inc 2 weeks Holidays For 14 Weeks)</i>	\$2700 (\$900 per 4 weeks)	\$150	2019 - 30 Oct, 27 Nov 2020 - 8 Jan, 5 Feb, 4 March, 1 April, 13 May, 10 June, 8 July, 19 Aug, 16 Sept, 14 Oct, 25 Nov
IELTS Preparation for Success	097832B	4-26 Weeks <i>(inc 6 weeks Holidays For 26 Weeks)</i>	\$4500 (\$900 per 4 weeks)	\$150	2019 - 14 Oct, 11 Nov 2020 - 6 Jan, 3 Feb, 9 March, 20 April, 18 May, 6 July, 3 Aug, 31 Sept, 12 Oct, 9 Nov

*Additional AUD\$250 Non – Refundable Enrolment fee applies to all applicants. All the above mentioned fees and intake dates are indicative only and APEIRO Institute has the right to make changes prior to the course commencement. Visit APEIRO Institute website for the most updated information.

Other Fees and Charges

Administration fee	\$300
Course Variation Fee	\$250/ course
Credit card Surcharge (%of the amount being charged)	1%
Late Payment fee (Calculated from the date it was due)	\$50/Week
Overseas Student Health Cover	Refer to Website
Recognition of Prior Learning (if requested)	\$150-\$250 per unit
Re-assessment fee - theory	\$50 per assessment
Submission of assessment after the due date	\$25 per assessment
Re-enrolment fee - per unit	\$150
Re-print of any Statement of Attainment/ Certificate	\$50
Re-issue of Student ID Card	\$15
Printing Services	\$0.30 (B/W) \$1.00 (Color)
Airport greeting service (if requested)	\$120
Accommodation placement fee (if requested)	\$280

How to Enrol



Student Support Services

APEIRO INSTITUTE has a Student Support team designated to support students. Reception is open daily Monday to Friday. Students are free to approach any APEIRO INSTITUTE staff member for help or make general enquiries, for example: directions, public transport and other day to day needs, banking, access to other services.

Arrival in Australia

APEIRO INSTITUTE can arrange for students to be met at the airport and taken to their accommodation. Students need to indicate the need of this service when submitting the application form.

Orientation and Transition Support

All students go through an Orientation Program during their first week at APEIRO INSTITUTE. The Orientation program involves familiarisation with the campus, facilities and living and studying in Perth. Orientation program includes:

- Orientation to Perth and a tour of APEIRO INSTITUTE
- Details of the course, time table, staff members contact details
- Welfare and Academic issues
- Details of other Student Services and Support available in the Student Handbook
- Information on other support available eg. Legal, The Emergency and health services available
- Visa requirements and student safety for international students
- A copy of the Student Handbook (*Electronic Version*)

Academic, Language and Learning Support

APEIRO INSTITUTE is dedicated to provide the best Academic support. Students can approach their trainers, Course Coordinators, Department Head or the Student Support Officers if they need assistance in meeting course requirements.

The Course Coordinators and/ or Department Head can assist students with the following:

- a) Study Skills
- b) Time tables
- c) Learning Support Strategies
- d) Academic issues

Student Welfare Services

APEIRO INSTITUTE has Student Support Officers to provide a basic counseling service to all students. This service provides assistance to students experiencing difficulties in any aspect of their lives, including issues of academic or personal nature.

The student support officers are available to international students to help the access study support and welfare-related services such as;

- Legal Services
- Accommodation
- Emergency and Health Services
- Facilities and Resource
- Complaints and appeals processes

APEIRO INSTITUTE can also refer students to an external Counseling Service for various issues if necessary however each issue is dealt with on a case by case basis. There is no fee attached to this welfare support and referral service. Any cost charged by the external services will be paid by students.

In addition to the normal support services, international students are provided with a range of specialist services like assistance with resume-writing and looking for part-time work. Students have access to welfare-related support services to assist with issues that may arise during their study, including program progress, attendance requirements and accommodation. These services are made available to all APEIRO INSTITUTE students.





Enrolment Form International Student



www.apeiro.edu.au

Submit Your Completed Application via Email (admissions@apeiro.edu.au) or through your agent or post to **APEIRO Institute**

Level 1, 10, Victoria Ave, Perth, WA- 6000. Australia

Note: Information contained in this document is utilised in accordance with APEIRO INSTITUTE Privacy Policy

1. Course Selection (Please choose by placing an X in the boxes that apply to you)			
Course Name		Weeks	Intake #
IELTS Preparation for Success (CRICOS course code: 097832B)		Weeks	
PTE Preparation for Success (CRICOS course code: 097833A)		Weeks	
BSB50215 Diploma of Business (CRICOS course code: 097653E)			
BSB60215 Advanced Diploma of Business (CRICOS course code: 097654D)			
Other: <i>Please specify</i>			
<i>Note: Details of Intake Numbers can be obtained from our Course Schedule or by visiting our website: www.apeiro.edu.au</i>			
2. Personal Details (Please choose by placing an X in the boxes that apply to you)			
Title:		Gender:	Male Female
Date of Birth:	DD / MM / YYYY		
Surname:			
Given Names:		Middle Name:	
3. Passport Details			
Nationality			
Passport Number:			
Passport Issue Date:	DD / MM / YYYY	Passport Expiry Date:	DD / MM / YYYY
Languages Spoken:			
<i>A certified true copy of your original documents must be provided as part of your application (If Not Verified By Agent)</i>			
4. Contact Details			
Address (Home Country)			
Address:			
<i>House number, Street, Suburb, State, Country and Postal Code</i>		Postcode:	
Phone:		Mobile:	
Email:			
Address (Australia) - If Known			
Address:			
Suburb:			
State:		Postcode:	
Phone (Home):		Mobile:	
Email:			

Emergency Contact Details				
Name:		Relationship:		
Address:				
Country:		Postcode:		
Phone (Home):		Phone (Work):		
Email:				
Correspondence Address (Preferred Contact Address)				
Correspondence Address:	Home Country	Australia	Agent Address	
5. VISA Details				
VISA Type (If Held)				
Student	Visitor	Working	Bridging	Other: <i>Please Specify</i>
VISA Number:				
VISA Expiry Date:				
Are you in Australia now:	Yes		No	
If you do not currently hold a valid VISA please complete the following:				
Location of Lodgement:	Country		City	
Date of Intended Application:	DD / MM / YYYY			
<i>A copy of your original documents must be provided as part of your application</i>				
6. Overseas Student Health Cover				
Is Your OSHC Arranged?	Yes (Part A)		No (Part B)	
Part A – Insurer Details				
Name of Insurer:				
Member Number:				
Date of Expiry:	DD / MM / YYYY			
Part B - APEIRO INSTITUTE to arrange				
Cover Type:	Single	Couple	Family (Part C)	
Part C: Dependants Details (<i>Full Name, DOB, Gender</i>)				
1)				
2)				
3)				
1. The Australian Government requires all persons entering Australia on a Student Visa to have Overseas Student Health Cover (OSHC). 2. The length of your OSHC MUST cover the total length of your course(s)				

7. English Language Proficiency <i>(Please choose by placing an X in the boxes that apply to you)</i>			
Assessment Type	Score (Individual & Overall Scores)	Date Achieved	
IELTS			
TOEFL			
Other <i>(Please Specify)</i>			
Not Required. English is my first language:		Yes	No
Do you need any additional support?		Yes	No
Specify:			
8. Education Details			
What is your highest level of education COMPLETED? (Degree, Diploma, / University)			
What is the last School / College that you attended?			
In which Year did you complete School / High School ? <i>(Year 10, Year 12)</i>			
9. Recognition of Prior Learning / Credit Application			
Would you like to make an application for RPL / Credit:	Yes		No
<i>Note: You can download an RPL / Credit Application Kit by visiting our website: www.apeiro.edu.au</i>			
10. Unique Student Identifier (USI)			
APEIRO INSTITUTE is required by law to verify your Unique Student Identifier (USI) before we can issue certification.			
Do you have a USI?	Yes	*NO	Your USI No.
* Obtaining your USI?	I will obtain my own USI from http://www.usi.gov.au/ . I understand that delay in supplying my USI to APEIRO INSTITUTE may result in delay in course participation and certification.		
	I authorise APEIRO INSTITUTE to obtain a USI on my behalf.		
11. Accommodation, AIRPORT Pickup Request			
Do you require APEIRO INSTITUTE to arrange accommodation:	Yes		No
If Selected YES , What type of accommodation would you like:	Shared		Private
Do you require APEIRO INSTITUTE to arrange for Airport pickup:	Yes		No
Additional information regarding above requests: <i>(If Selected YES to any)</i>			

12. Disability Status (Please choose by placing an X in the boxes that apply to you)			
Do you suffer from any physical / mental disability that may affect your participation in the course?			
Yes	No	– Go to Question 13	
Disability, Impairment or Long-Term Condition			
Hearing / Deafness	Acquired Brain Impairment	Vision	
Physical	Learning	Medical Condition	
Intellectual	Mental Illness	Other / Not Specified	
13. How did you hear about APEIRO Institute?			
Agent <i>Please Specify</i>		APEIRO INSTITUTE: (<i>Website, Brochure, Expo</i>)	
Family Member / Friend		Other <i>Please Specify</i>	
APEIRO Institute Student: <i>(Please Provide Students Name)</i>		APEIRO Institute Staff member: <i>(Please Provide Staff Member's Name)</i>	
14. Education Agents (To be filled if applying through an Agent)			
Education Agent:	Yes	No	
Name:			
Phone (Work):		Mobile:	
Email:			
15. Current Employment Status			
Full time Employee	Not employed - not seeking employment	Self-employed, Not employing others	
Part-time employee	Unemployed - seeking Part time work		
Employed in the Family Business	Unemployed - seeking full time work	Employer	
16. Reason to STUDY			
To Get Job	I Need extra Skills for my job	It was a requirement for my job	
To Get better Job/ Promotion	To develop my existing business	To get into another course of study	
For Self Development	To try different career	To start my own business	
Others <i>(Please Specify)</i>			
17. Payment Details			
Applications submitted to APEIRO INSTITUTE will incur a NON REFUNDABLE Application Fee of AUD250 . This fee applies to all applications directly to APEIRO INSTITUTE or through APEIRO INSTITUTE's agents.			
Account Name:	Apeiro Institute Pty Ltd		
BSB:	066 118	Account Number:	1041 4136
Bank Name:	Commonwealth Bank of Australia		
Bank Address:	672A Beaufort St, Mount Lawley WA 6050		
SWIFT Code:	CTBAAU2S		

Table 1 - Refund and Cancellation			
Reason for Refund/Cancellation	Notification Period	Refund	Cancellation Fee
Application for visa is unsuccessful	Before Course Commences	Full refund less cancellation fee	\$300
Application for visa is unsuccessful	After Course Commences	Full refund less cancellation Fee	\$300 cancellation administration fee + Pro- rata of tuition fee used calculated on a weekly basis
Student Default Student with a student visa withdraws Or Student is cancelled for breach of College's rules or breach of student visa rules	More than 10 weeks before course commences	Full refund less cancellation fee	10% of a total course fee*
	More than 4 weeks and up to 10 weeks before	70% of a total course fee*	30% of a total course fee*
	Less than 4 week before the course	30% of a total course fee*	70% of a total course fee*
	After Course Commenced	Nil	100% of a total course fee*

* Conditions of refund

- For refund purpose, fees will be calculated based on number of teaching weeks (excluding holidays).
- Date of 'refund form' submitted will be considered as a date of notice given to Apeiro Institute for refund calculation purpose.
- If the application is made at the start, middle or end of a teaching week, that specific week will be considered as teach-out week -For refund calculation, it will be assumed that the candidate has paid full course fees.
- If a candidate/student has only paid partial fees, it may result in - a candidate owes to Apeiro Institute or Apeiro Institute owes to a candidate/student. This will be calculated for each individual application.

Student Default occurs when:

- The course starts at the location on the agreed starting day, but the student does not start the course on that day (and has not previously withdrawn); or
- The student withdraws from the course (either before or after the agreed starting day); or
- APEIRO INSTITUTE refuses to provide, or continue providing, the course to the student because of one or more of the following events:
 - The student failed to pay an amount he or she was liable to pay the provider, directly or indirectly, in order to undertake the course;
 - The student breached a condition of his or her student visa as stated by Department of Home Affairs;
 - Breach of Apeiro Institute's policies as outlined in the student handbook.

Refunds after Apeiro Institute Default

In the unlikely event of Apeiro Institute, **within 14 days of the default**, Apeiro Institute will:

- Either offer you an alternative place at Apeiro Institute's expense, that is accepted by you in writing; or
- Refund you the unused portion of the prepaid fees.

If Apeiro Institute is unable to provide a refund or place you in an alternative course, then the student shall be referred to the Tuition Protection Service (TPS: www.tps.gov.au), who will place you in a suitable alternative course or if a suitable course cannot be found, pay a refund as calculated by the TPS Administrator.

Commencement Dates

- ** Please note commencement for correspondence courses is the date that the training materials were posted to the client.
- Commencement for online clients is the date that online access is provided to an individual client for a particular course.
- Commencement date for a classroom based learning mode is the first day of the course.

Complaints and Appeals

- Whilst studying at APEIRO INSTITUTE you have the right to access the Complaints and Appeals process at any time.
- You shall be afforded 20 days to access this process, otherwise any Complaint or Appeal will be taken as being accepted by you

Visa Requirements

- The Australian Government has specific guidelines for the issue and management of student VISA's. The failure to comply with these conditions may result in your VISA being revoked at you returned home.
- As an education provider, APEIRO INSTITUTE has the responsibility to ensure you maintain a satisfactory rate of Course Completion and Attendance.
- APEIRO INSTITUTE will monitor this and advise you if you are failing to meet to the minimum requirements.
- APEIRO INSTITUTE is required to report any issues relating to this to Department of Home Affairs.

Deferral, Suspension or Cancellation of Course

- APEIRO INSTITUTE has specific guidelines that meet the requirements of the National Code and ESOS Act of the Deferral, Suspension and Cancellation of student enrolments.
- If a student's enrolment is Deferred, Suspended or Cancelled for any reason, then APEIRO INSTITUTE is required to inform Department of Home Affairs of this at the earliest available opportunity.
- The student is also required to contact Department of Home Affairs to ascertain any changes in their VISA conditions.

Credit Transfer / Recognition of Prior Learning

- Students are encouraged to apply for Credit Transfer or RPL prior to enrolment and to request an application kit where necessary:
 - Where Credit Transfer or RPL is granted before the issue of a VISA, the course duration will be indicated on the Confirmation of Enrolment (CoE),
 - Where Credit Transfer or RPL is granted after the issue of a VISA, the amended course duration will be reported via PRISMS within 14 working days and a new COE will be issued.
- Students are required to submit the Credit Transfer or RPL Application Kit in order to have the Credit Transfer or RPL formerly assessed.

Privacy

- We will not disclose any personal information that we gather about our students to third parties other than the Government Organisations like DHA, VET, Dept of Education etc and to those which we are obliged to under ESOS, SRT0's and National Code Standards. We use the information collected only for the services we provide. No student information is shared with another organisation. If student information is required by a third party we will obtain written consent from the relevant student prior to release of any information.
- Should students seek access to their information we have a documented procedure requiring authorisation before this can occur.
- For more information, Please refer to APEIRO Institutes Privacy Policy.

18. Declaration

I understand the Terms and Conditions, the Privacy Policy and the Cancellation and Refund Policy of APEIRO INSTITUTE and confirm that I have been fully advised of the fees, cancellation and refund conditions and conditions of enrolment and I agree to be a student at APEIRO INSTITUTE.

I allow APEIRO Institute to publish my name and/ or any of my images for promotional purposes during or after completing my studies APEIRO Institute.

I declare that to the best of my knowledge, the information I have supplied is accurate and complete in every detail.

Name:	
Signature:	
Date:	

19. Application Checklist

Have you:

- | |
|---|
| Completed all sections of this application |
| Attached certified true copies of your VISA (If Held) |
| Attached certified true copies of your Passport |
| Attached certified true copies of your qualifications |
| Attached certified true copies of your English Proficiency |
| Attached any other relevant documentation |
| Attached Completed Student Selection Criteria Questionnaire
(Can be downloaded from www.apeiro.edu.au) |

STAFF-IN-CONFIDENCE (WHEN COMPLETE)

Apeiro Institute

Level 1, 10, Victoria Ave, Perth, WA- 6000. Australia

☎ 08 6558 0303

www.apeiro.edu.au

APEIRO
I N S T I T U T E



• RTO Code: 45394 • CRICOS Code: 03703M

ABN: 23 615 355 265

Every effort has been made to ensure that the information in this booklet is current and accurate as of 16-09-19. Apeiro Institute holds the right to make any amendments without prior notice. Please visit www.apeiro.edu.au for the most updated information.